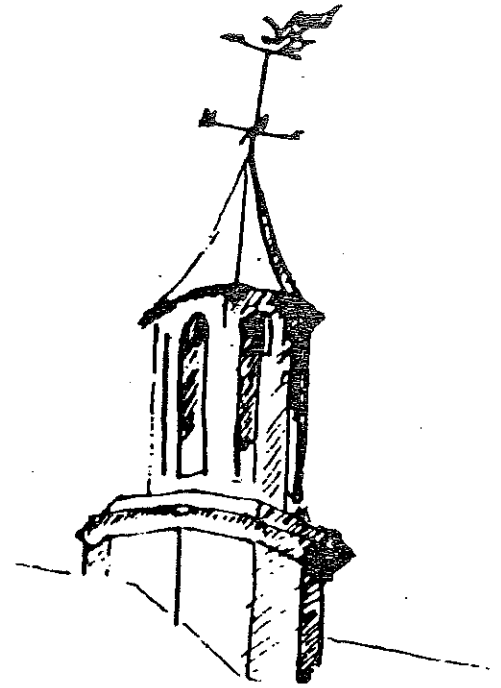


The Echo

The Town of
GLEN ECHO, MARYLAND
Chartered, 1904



December 2006

COUNCIL TO TAPE MEETINGS, PUT MINUTES, ORDINANCES ON WEBSITE

By Jerry Bodlander

The town council plans to again tape its meetings. Resident Carlotta Anderson said it was "essential" that the meetings be taped so anyone can hear what happened and the town will have a record.

But Mayor Debbie Beers stressed it is being done as an internal record.

She said people shouldn't expect that every meeting is taped. She expressed fears that people will come to expect it, and the town would somehow be held responsible if one meeting is missed and someone needed that tape for a lawsuit.

As part of a large discussion on improving communication between town officials and town residents, the town council plans to post its agenda and minutes on the town website. (<http://www.glenecho.org>). Ms. Anderson claimed residents aren't "being informed sufficiently about things that they ought be able to know" and that the information should be easily accessible. She said the website currently doesn't carry important information, including ordinances, and asked how people can obey them if they don't know what they are.

Mayor Beers said the ordinances would be posted on the website with a disclaimer that the list was incomplete. Several ordinances are in the process of being revised.

**COME TO GLEN ECHO'S
HOLIDAY PARTY!**

**JOIN YOUR NEIGHBORS
FOR BREAKFAST AT THE
TOWN HALL**

**SATURDAY, DECEMBER 9,
9:00-10:30 A.M.**

**BRING THE FAMILY AND A
FAVORITE DISH**

**PLEASE CALL AND
VOLUNTEER
301-320-4041 OR TOWN-
HALL@GLENECHO.org**

THE ECHO

Published unofficially by, for and in the Town of Glen Echo, Maryland. Distributed free to Glen Echo residents. Subscriptions for non-residents: \$12 per year (to subscribe call Susan Grigsby, 301-229-7735). Copies of *The Echo* on file at Little Falls and Rockville libraries. Total circulation: 190. Distributed the first weekend of the month.

EDITOR Carlotta Anderson 301-229-3748
email: Carlotta.ra@verizon.net
ASST. EDITOR Diana Hudson-Taylor
REPORTERS Jerry Bodlander
DISTRIBUTION Brockie and Jane Stevenson
Anna Bayer
Maire Hewitt
Jerry Cave
Leland Schwartz
CIRCULATION Susan Grigsby

Next Deadline December 22

Printed by Allied Printing, Bethesda

Letters to the Editor are welcomed. They must be signed. Articles for publication are also solicited. Any comments about *The Echo* may be addressed to the Editor, the Mayor or any councilmember. Volunteer reporters are always needed. Call the Editor at: 301-229-3748..

♻️ *Printed on recycled paper*

FREE HALL EVENTS FOR GLEN ECHO RESIDENTS

The following activities booked at the town hall are free for town residents:

Sunday, December 3—1:00 p.m. C&O CANAL ASSOCIATION BOARD MEETING.

Saturday, December 9, 9:00 a.m.—TOWN HOLIDAY PANCAKE BREAKFAST

Sunday, December 10, 3:00-5:00 p.m.—FAMILY DANCE, AGES 4 AND UP

Monday, December 11, 8:00 p.m.—TOWN COUNCIL MEETING

Sunday, December 17, 8:00 p.m.—BLUES CLASS & DANCE

Saturday, December 30, 7:30 p.m.—GLEN ECHO FILM FESTIVAL

Every Wednesday, 8:00-10:30 p.m. English Country Dance. Live music. No experience or partner needed. Sponsored by Folklore Society of Greater Washington.

TOWN OF GLEN ECHO MARYLAND

20812

Town Office:301-320-4041

Town Office Fax:301-320-3639

E-Mail: townhall@glenecho.org

Office: 6106 Harvard Avenue; mailing address: Box 598, Glen Echo, MD

20812

**Office Hours: Tuesday and Thursday, 12:30-3:30
or by appointment**

MAYOR

Debbie Beers 301-229-7308

COUNCIL MEMBERS

Eve Arber 301-263-0016

Steve Matney 301-320-2059

Dan Macy 301-229-2122

Nancy Long 301-332-3823

CLERK-TREASURER

Cathie Polak 301-320-4041

TOWN WEBSITE ADDRESS:



Eleanor Balaban

MacArthur Blvd. Corridor Specialist

Long & Foster Real Estate, Inc.

Main: 301-907-7600 Direct: 301-215-6875

www.EleanorBalaban.com

“Let’s talk about
real estate along
MacArthur Blvd.”



AROUND TOWN

John Morrow's photography has again been recognized in a competition. His image titled "Brown Bear" is among those on exhibit at the Smithsonian National Museum of Natural History. This exhibition features the finest images from the museum's 2006 Nature's Best Photography International Awards Competition and the 2006 National Wildlife Photography Awards. It will be open to the public through April, 2007...

Raya Bodnarchuk's **11 animal sculptures** have been installed at the Forest Glen Pedestrian Bridge at the intersection of Rt. 495 and Georgia Ave. A ceremony will take place at the beginning of January, but anyone can walk the bridge and see them now...

Developer Hemingway Homes is proposing to **build five homes** on a 3-acre lot across MacArthur Blvd. from the Cabin John Shopping Center, *The Village News* reports...

Cabin John is planning to **digitize 40 years of issues** of the *Village News* and is now soliciting bids for the work...

The **wooden stockade fence** recently erected along MacArthur Blvd. and up the hill directly across from the main entrance to Glen Echo Park was put up to prevent vandalism, the owner of the property told several residents of Tulip Hills. The vandalism was damage caused by paintballers. Local residents have also noticed that a tall ironwork decoration that topped one of the entrance gate pillars is now missing. The fence encloses a large tract of land, a stone house and an outbuilding, and the driveway to them from the boulevard...

WELCOME, NEWCOMERS!

If moving to a newer house is progress, then **Beth Rockwell** and **Jim Ford** are regressing. They have just moved into 7300 University Ave., a house probably dating from the late 1890s. The house they moved from on Wilson Lane is an old farmhouse built in 1903. Previously Beth lived in Bannockburn in a 1949 house. "We're old house people," she acknowledged.

They had planned to renovate the Wilson Lane house, which is on a half-acre and has a barn in back, until their old friend Jane Stevenson told them about the Glen Echo Chautauqua house with double turrets. Even though it needed a lot of work, they were charmed by it, especially since it had the downstairs bedroom they had planned to add to their other house.

Another attraction was the number of people they already knew in Glen Echo. Beth went to school with Jim Shaut of Harvard Ave. in upstate New York. They knew the Vassar Circle Springuels from the Bannockburn Pool. And Eve Arber and Susan Grigsby are staffers at American Plant Food, where Jim is the Chief Operating Officer.

Beth has taught English at Whitman High School since 2000. Her two children once attended Whitman, as well as Pyle Jr. High and Bannockburn Elementary School. Her daughter, Kate, 24, lives with them in Glen Echo and also works at American Plant Food. Jim's daughter Leila, 24, live in Charlotte, N.C. They are also joined in Glen Echo by Harley, 4, a Golden Beagle; Wiley, 6, a mutt, and Big Cat, 10.

On Dec. 23 they will celebrate their wedding at the Church of the Redeemer in Fairway Hills, just across from Glen Echo.

Beth is an avid reader and enjoys gardening, but as a high school teacher is left little time for anything but grading papers. She does, however, sponsor the Whitman Fashion Society, which presents a show at the annual Festival of the Arts. Jim likes gardening, fishing, canoeing and taking jaunts in his motorboat.

Welcome to Glen Echo!

SUNOCO



KENWOOD SUNOCO CENTER

(formerly Kenwood Mobil)
5201 RIVER ROAD
BETHESDA, MARYLAND 20816
PH: (301) 652-9527 • FAX: (301) 652-1138

Michael Carrick
OWNER

Dick Spicer
SERVICE MANAGER

**AUTO REPAIR - FOREIGN AND DOMESTIC
FACTORY SCHEDULED MAINTENANCE**

Digital Handyman, Inc.

Personal Computer Solutions

240.447.6535

Andy Malmgren
Glen Echo, MD

Microsoft
CERTIFIED
Professional

CompTIA
A+ Certified

On-site
computer
installation and
repair

Virus removal
Maintenance
Upgrades
Networks
Training
Security

TOWNS COMPLAIN TO PEPCO ABOUT BROKEN STREETLIGHTS

Pepco officials met with representatives from 11 local municipalities in October to address complaints about streetlights. At a June meeting, nine of those townships had demanded lower prices, improved services, quicker maintenance response and expanded lamp selections, according to the *Gazette*.

Pepco managers told the representatives that they were addressing the concerns by fixing broken streetlights more quickly and developing a Web site for reporting outages. They said the goal was to begin work on 90 percent of broken streetlights within five days of being reported and 100 percent within 30 days.

They gave the municipal representatives at the meeting an email address for sending future reports of streetlight outages.

The option of purchasing decorative streetlights for Pepco to maintain was mentioned, but the Town of Kensington reported that it has already taken them "years to get an answer on how to initiate the process," the *Gazette* reported.

The group agreed to meet for a third time in January to follow up on Pepco's progress. The towns represented were Kensington, Garrett Park, Gaithersbury, Somerset, North Chevy Chase, Chevy Chase View, Chevy Chase Village, College Park, Greenbelt, Martin's Addition and Mount Rainier.

Glen Echo was not represented at the meetings.

CLASSIFIED ADS

FOR RENT IN GLEN ECHO: 4 Bedroom, 3 bath house. Recently remodeled with a large open kitchen, and master bath with double shower and Jacuzzi tub. Available Feb. 1. One-year minimum lease. Please call 301-263-0240 for more info.

FOR SALE: 2001 Ford Explorer Sport, black, part-time 4WD, V6 automatic, 2-door, 6-cd changer, Pioneer sound, leather seats, side step bars, AC, tilt, cruise, airbags, alloy wheels, disc brakes, good condition, 104K highway miles, \$7,200 or best offer. Brent McIntosh, 301-263-0239.

BANISH HOUSEHOLD CLUTTER & SIMPLIFY YOUR LIFE. Call Melanie Patt-Corner at "A Place for Everything." Household Organizing Service. 301-263-9482. Member NAPO and NSGCD.


FOR SALE. Beautiful oak roll top desk and matching oak swivel chair. Desk has lots of cubbies and seven drawers, including two file drawers. Chair has wheels and black leather seat cushion. \$300 for both. Please call Alexis Feringa or DJ Johnson (301) 263-1254.

Classified ads are free to Glen Echo residents. Fee to non-residents: \$.75 per line of 50 characters or fewer. Display ads: \$4 per column inch. Ads may be left with or mailed to the editor at 38 Wellesley Circle, Glen Echo, MD 20812. Make checks payable to: Town of Glen Echo. Deadline: 24th of each month.

PROPERTIES SOLD

5906 Oxford Rd.

\$850,000



Cheese, imported and domestic ▼
▼ Organically-grown produce
Nuts, dried fruit, grains & beans sold in bulk ▼
▼ Health & bodycare, cruelty-free

Serving the community since 1975.

Bethesda Co-op

301-320-2530 6500 Seven Locks Rd., at MacArthur Blvd. Mon.-Sat. 9-9, Sun. 9-7

TOWN COUNCIL NOTES

November 13

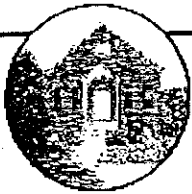
The town is trying to get **Bell Builders** to stop unauthorized construction activity. Mayor Debbie Beers said the town attorney has been told to advise the company it faces a fine of \$500 a day if it continues such activity. She said the company dug up the right-of-way and built an asphalt curb on Princeton Avenue without getting the necessary approval and that Frank Bell has been told to stay off town property but "totally ignores" the warning.

The transfer of part of the late Shirley Strong's property to the town has been completed. The town now owns the piece of land that Strong bequeathed to the town that is located at the corner of University and Princeton Avenues.

The council has approved a bid of \$3,795 to build a six-foot high pine fence with a criss-cross lattice top between the town hall and the adjoining property. It will replace a fence where several areas are rotting.

--Jerry Bodlander

NOTICE: At the Dec. 11 town council meeting there will be a hearing on resolutions to grant Verizon a non-exclusive license to operate cable and communications services within the town and to enter into a contract with the county to administer it.



Glen Echo Baptist Church

Serving Glen Echo families since 1939

Dr. Ed Curtis, Th.D., Pastor

Bringing God's Truth to Life

Sunday School9:30 am

Sunday Services.....11:00 am

Wednesday Activities7:00 pm

Mid-Week Bible Study.... Vassar Circle

HOME & GARDEN MAGAZINE MOVES TO GLEN ECHO

Washington Home & Garden magazine moved its business offices to Glen Echo last month. It is located at 6112 Oberlin Ave., where Bell Builders was formerly housed.

The magazine was started in 2003 by Jerry Cave, one-time sales manager for WTOP. Each issue is half about homes and half about the area around the home, i.e., landscaping, patios, etc. The current issue has articles about automatic generators, evergreen trees, remodeling, art in the garden, and how to mix fabrics, patterns and styles. A history article is always included; past subjects have included Glen Echo Park, the Cabin John Bridge, and Lockhouse 8.


Mr. Cave, who lived in Sumner from 1953 on and remembers Glen Echo Park from its amusement park days, now lives in Carderock. He went to school at Little Flower and then Sidwell Friends before attending Tulane University, and used to buy candy at Sycamore Store. He is delighted to have his offices only a block from Tulane Ave., reminiscent of his alma mater.

Publisher Cave has four employees at the Oberlin address, but the magazine's writers work out of their homes. The 120-page plus publication is printed in Pennsylvania in two batches—50,000 for Maryland and 50,000 for Virginia, with different ads. Most are mailed free to residences, but some are distributed at Safeway, Giant, Whole Foods, and other stores. This year there were three issues. There will be four in 2007 and Mr. Cave has promised that all Glen Echo addresses will receive them.

NEXT TOWN COUNCIL MEETING

Monday, December 11—8:00 p.m.
Glen Echo Town Hall
Contact the clerk-treasurer to add an item to the agenda

*Landscape Design • Installation • Decks
Retaining Walls • Maintenance • Hauling • Gutters*


HUGHES
LANDSCAPING

P.O. Box 498
Cabin John, Maryland 20916

John Hughes
301-589-6040

AN APPEAL TO THE GLEN ECHO COMMUNITY

The Glen Echo Park Partnership is conducting our annual year-end Appeal. The Partnership, which is responsible for the day-to-day operation of the park, depends on the generosity of our community to provide the visual arts, dance and family programs here at the park. This year our goal from the annual appeal is \$50,000. The funding will support on-going expenses at the park such as facility costs and program expenses.

Next year, the Yellow Barn Studio and Gallery will move into its new building, renovation of the historic Chautauqua Tower will be completed, Adventure Theatre will reopen in its newly renovated home, more artist studios will be added, and we will offer more classes, summer camps and special events than any time in the park's history.

We are also working with the National Park Service to develop an exhibit about the civil rights history of the park. We need your support to continue to bring this wide array of programming to our community. Please join us as a member or make a contribution. Thank you.

Year End Appeal letters and forms are included in this issue of *The Echo*. Please call 301-634-2230 for more information.



Worship at REDEEMER

■ SUNDAY

The Holy Eucharist	8:00 am
Adult Education	9:15 am
Choral Eucharist	10:30 am
Sunday School & Nursery Care	10:30 am

■ MONDAY

Taizé Service (<i>First Monday</i>)	7:30 pm
Contemplative Eucharist (<i>Third Monday</i>)	7:30 pm

■ WEDNESDAY

Morning Prayer & Breakfast	8:30 am
The Holy Eucharist	12:00 pm

THE CHURCH OF THE REDEEMER

6201 Dunrobbin Drive ▪ Bethesda, Maryland 20816
(301) 229-3770 ▪ office.redeemer@verizon.net

www.redeemberbethesda.org

ELECTION RESULTS

The voter turnout in the November election for Precinct 722 was 64 percent, according to Madeleine Sigel, Precinct Chairman. This was higher than in most precincts.

The number of voters was 1,290, in Precinct 722, which includes Glen Echo and stretches from Goldsboro Rd. to Wilson Lane in one direction and River Rd. to the river in the other.

The percentage of votes for the winning candidates were as follows:

Governor: O'Malley	70%
Comptroller: Franchot	72%
Senator: Cardin	77%
Congressman: Van Hollen	82%
Attorney General: Gansler	77%
County Executive: Leggett	75%

RECYCLING NEWS

First, kudos to everyone who is currently recycling... and getting it right! However, on recent walks through town on Tuesdays it's apparent that a number of people are not aware of County guidelines regarding recycling. So, here are a few reminders;

- No caps or lids on bottles/jars
- No yogurt containers
- No deli/salad bar containers
- No loose newspaper/mail in recycle bins
- Plastic grocery bags can't be used to hold bottles/cans

If you need an extra recycle bin, contact the town hall.
Keep up the good work!

--Constance Macy

Design that Fits, LLC

...your room, your style, and your budget

Rebecca Subbian

Interior Re-designer + Decorator

Bethesda, MD

Phone: 301-257-9229

www.designthatfits.com



NEWS FROM GLEN ECHO PARK

The **maintenance pen** at Glen Echo Park which was damaged by fire is scheduled to be demolished by mid-December. There is some confusion over whether there will be a public meeting regarding the look of the new structure that will take its place. Site Manager Kym Elder said she's been told by park officials such a meeting isn't needed by law because the building will be in the same location and will have the same footprint and the same function as the previous building. She previously had told the town council there would be such a meeting. She said she would get back to the council as to why it isn't considered necessary.

The longstanding question of whether the town or the park owns **Oxford Road** may be coming to an end. Ms. Elder told the council last month that "preliminarily" it looks like the town owns the road, as the town has always maintained. She says she hopes the final report will be available by the end of the year.

There are fewer **park service officers** than ever patrolling the parkways on both sides of the Potomac River. Ms. Elder said the park service is down to seven than 12 officers to cover both parkways 24 hours a day, seven days a week, which means a longer response time to accidents.

The National Park Service acquisition of the section of the former **streetcar right-of-way** which abuts Glen Echo Park is "almost a done deal," according to Ms. Elder. She says it ended up being a property transfer because WMATA needed a piece of property owned by the federal government. The deal would cover the area from Oxford Road to the Irish Inn at Glen Echo, including the trestle.

--Jerry Bodlander

LEAF RAKING TIME!

Time to rake your leaves to the curb.
Leaves will be picked up before Dec. 11,
weather permitting.

TREASURER'S REPORT

October 2006

Washington Gas Energy Services	\$1,316.17
Dennis Alexander (audit)	\$2,600.00
Connecting Links (website)	\$187.50

POSTAL INQUIRIES?

It is no longer possible to get postal information by calling one's local post office.

For information by phone call toll-free number 1-800-ASK-USPS (1-800-275-8777) for all postal

NEED AIR CONDITIONING SERVICE ?

LOCAL RESIDENT PROVIDES QUALITY WORK
DAYS, EVENINGS, WEEKENDS, NO EXTRA CHARGES
OVER 30 YEARS OF EXPERIENCE--ALL MODELS
ALL NECESSARY LICENSES AND INSURANCE
PLENTY OF REFERENCES

CALL ANYTIME 301-365-2155

SAM OSLER

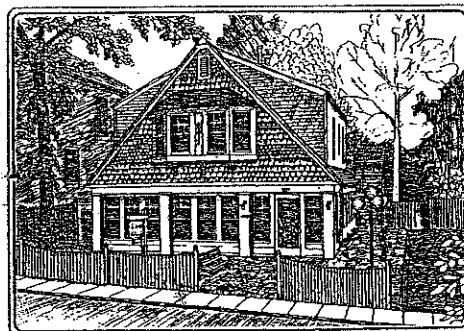
7105 GARMON ROAD, BETHESDA, MD

WSSC #20215

MARYLAND HVAC #16047

LAW & ASSOCIATES, INC.

(301) 229-8500



Heather Cottage

Financial Planning

GLEN ECHO PARK ACTIVITIES

HOLIDAY SEASON AT THE PARK

Saturday, Dec. 2: Create gifts to share or something for your own stocking at holiday themed workshops on from 9:00 a.m.-6:00 p.m. Enjoy performances, tours and a hot chocolate bar at the first "lighting" of Glen Echo Park from 7:00-9:00 p.m.

Dec. 1-30 Holiday Art Show and Sale

Works for sale will include painting, photography, glass, ceramics, mixed media, crafts and jewelry. The exhibit will be located both in the Popcorn Gallery, weekends from noon-6:00 p.m., and the Partnership Office in the North Arcade building, daily 10:00 a.m.-6:00 p.m. and Sunday noon-6:00 p.m.

THE PUPPET THEATRE

The Nutcracker

To December 31

Wednesday through Friday, 10:00 & 11:30

Saturdays & Sundays, 11:30 & 1:00

Tickets: \$7.00 Call 301-320-6668

ADVENTURE THEATRE

The Lion, the Witch and the Wardrobe

December 9-30

Weekends at 1:30 and 3:30

Tickets: \$8.00 Call 301-320-5331

YELLOW BARN STUDIO & GALLERY

12TH ANNUAL JURIED MEMBERS SHOW

Saturdays and Sundays, Dec. 2-17, noon-5:00 p.m.

(The Gallery is temporarily located on the third floor of the main arcade building.)

FILMS AND TOURS

Saturdays and Sundays, December 2 - 30

A 30-minute film is shown at 11:30 a.m. about the 1921 Dentzel carousel. Learn about how it was saved by a community effort, the operators who have been working the carousel for the last 30 years, the restorer who returned the carousel to its original beauty, and two people who have kept the memories alive.

A 60-minute film documentary is shown at 4:00 p.m. and highlights the park's 115-year history from a National Chautauqua Assembly to a premiere amusement park.

Carousel tours start at noon and give visitors a closer look at the beautiful 1921 Dentzel carousel. Find out how it was made, how it works, and about the rest of the amusement park attractions that were built around it.

Hear about the civil rights protests and the inspiring story of how the town rallied together to save the carousel. Park tours begin at 2:00 p.m. and lead visitors on a walking tour to learn about its fascinating history and the current programs in arts, dance and children's activities.

Films are shown at and tours begin at the visitor's desk in the Arcade Building Saturdays and Sundays. Visit www.nps.gov/glec.

DO YOU WANT TO GET TOWN NOTICES BY EMAIL?

The town clerk/treasurer has a list of email addresses for Glen Echo households. She can use this list to immediately contact residents with information about such things as changes in dates of events, signing up for parties, what movie will be shown at the regular film festival evenings, etc.

If you wish to have your address included in this list, please email the town office at townhall@glenecho.org.

SNOW MUST BE REMOVED FROM SIDEWALK IN 24 HRS.

The town council wants to remind residents that they are obligated to remove snow from the public sidewalks abutting their properties within 24 hours after any snowfall.

In addition, under the town's snow emergency plan, cars may park only on the north (i.e., MacArthur Blvd.) side of University or on side streets after a snowfall so that the snowplows may keep a side section of the roadway clear. There should be **NO PARKING** on the river side of University.